



PFC Corofil Fire Protection and Acoustic Systems

The CF System for Timber Floor Constructions.

To be applied to timber compartment floors

CF System Description

The PFC Corofil CF Fire Protection System (Patent No. 0 218 375) provides a simple and cost effective method of increasing the fire resistance of timber compartment floors. All the components are lightweight and easily manageable, which allows the complete system to be installed using basic tools.

Fire Characteristics

BS476 Part 21 which satisfied the requirements of Part B of the Building Regulations. The Systems Integrity and insulation were maintained throughout the test duration of 108 minutes. Test Report confirmation will be supplied on request. FIRTO – TE 5487.

Applications

The system is suitable for installations in both new and existing buildings, particularly when being converted into flats or HMO's, and where the preservation of the ceiling is required.

Components in the CF System

The System Incorporates PFC Corofil CI44 Slabs, CF50 Galvanised steel brackets pre-drilled for fixing, CF19 Pre-Formed galvanised steel supports and Firestop Compound where applicable.



For more information

Contact our technical sales office (Tel: +44 (0) 208 391 0533) with details of the floor area (m²) to be upgraded.

n55Plus

CI/SFB

(23.9) | Kml | (K2)

August 2005

PFC COROFIL Firestop Products, Davis Road, Chessington, Surrey KT9 1TU

Tel: +44 (0) 208 391 0533 Fax: +44 (0) 208 391 2723 E-mail: sales@pfc-corofil.com

www.pfc-corofil.com

The CW System

For stud wall partitions

CW System Description

The PFC Corofil CW System provides a simple and effective method of increasing the fire resistance of timber stud partitions. The components are lightweight and easily manageable, allowing the system to be installed using basic tools.

Fire Characteristics

BS476: Part 22 – 60 minutes, which complies with Part B of the Building Regulations, Test report is available on request. LPC TE6597

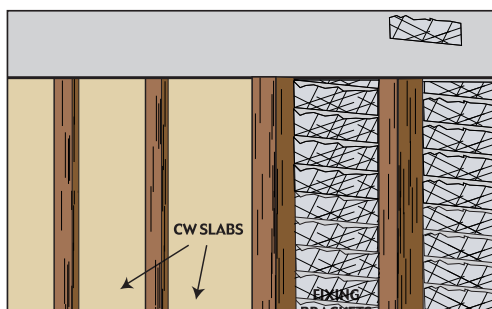


Diagram of a stud wall partition showing a typical installation



Uppark House - CF & CW System installed

Applications

Allows the retention of existing lath and plaster on one side of a partition. The system may also be installed in new constructions.

Components in the CW system

- C144 Slabs
- CW Galvanised steel retaining brackets, pre-drilled for fixings.

Specification of the CF and CW Systems

Install the PFC Corofil CF and CW Fire Protection Systems to provide fire protection for upgrading timber floors and stud wall constructions. Installation to be fully in accordance with manufacturer's instructions. Certification upon final inspection is available.

For more information

Contact our Technical Sales Office (Tel: +44 (0) 208 391 0533) with details of the floor or wall area (m²) to be upgraded.



n55Plus